

Groom's Attire

2016



MICHAEL
MICHAEL KORS

The Black Sterling
Slim Fit Wedding Suit

JFW

JIM'S FORMAL WEAR

EST 1964

Over 5000 Locations Nationwide



Manhattan Slim Fit Tuxedo
by Tony Bowls / 930

Slim Fit Styles!

Contemporary tuxedo and suit styles, each with a flattering silhouette, to complement all the gentlemen in your party - including **Big and Tall** sizes.

◀ On the Cover:
Black Sterling Slim Fit Wedding Suit
by Michael Kors / 472

Grey Aspen Slim Fit Tuxedo
by Stephen Geoffrey / 322





Heather Grey Aspen Slim Fit Tuxedo
by Stephen Geoffrey / 362



Havana Slim Fit Suit by Lord West / 252

The added touches
to complete your Slim Fit Look:



Fitted Formal Shirts
in black, white & ivory



Modern Slim Fit Pants



MICHAEL
MICHAEL KORS

Berkeley Slim Fit Tuxedo by Michael Kors / 990



Grey Aspen Slim Fit Tuxedo
by Stephen Geoffrey / 322

Shades of GREY

Choose from a number of finely tailored grey styles to reflect the mood of your wedding. Light, medium, and dark greys are available - pair them with vibrant colors to make a splash or subtle colors for a classic look.



Grey Portofino Slim Fit Tuxedo by Tony Bowls / 301



Steel Grey Tuxedo by Jean Yves / 342



Heather Grey Aspen Slim Fit Tuxedo by Stephen Geoffrey / 362



Grey Ceremonia Slim Fit Suit by Jean Yves / 352



Grey Dillon Slim Fit Suit by Stephen Geoffrey / 312



Destination & Outdoor Weddings

Comfortable tuxedos and suits to bring sophistication to your destination affair!

Tan Havana Slim Fit Suit
by Lord West / 252



Black Sterling Slim Fit Wedding Suit
by Michael Kors / 472



Slate Blue Aspen Slim Fit Tuxedo
by Stephen Geoffrey / 382

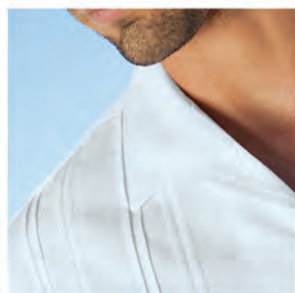


Grey Aspen Slim Fit Tuxedo
by Stephen Geoffrey / 322

For Keeps...

The Stephen Geoffrey Riviera is a suit made up of a lightweight linen jacket and trousers and a cotton-blend guayabera shirt.

The Riviera is a purchase only ensemble.



Guayabera Shirt / N20W



Linen Trousers / N26



Riviera Destination Suit Coat by Stephen Geoffrey / N25

Your wedding.
Your style.

Your

COLORS!



NEW COLORS ADDED!
Expressions Fullback Vests,
Ties & Pocket Squares



Expressions Fullback Vests, Ties & Pocket Squares.
Available in 39 colors!



A multitude of color choices allow you to custom coordinate the accessories for every member of your wedding party.

See **MORE** Vest Patterns and Colors

Visit jimsformalwear.com for a complete look at ALL of our Fullback Vests, Ties and Cummerbunds!



Colorful Formal Socks

Color your groomsmen from head to toe with brightly colored socks. Available in 12 colors.

Thousands of Colorful Combinations!

Choose from the hottest accessory colors created specially to match today's dresses. How can you be certain of a match? Easy - you'll find hundreds of fabric swatches inside our Accessory Collection catalog! Find it at your nearest Jim's Formal Wear Retailer.



See our Accessory Collection catalog for pages filled with fabric swatches.



New Black
Wedding Suit!

MICHAEL
MICHAEL KORS Black Sterling
Slim Fit Wedding Suit
by Michael Kors / 472

MICHAEL
MICHAEL KORS



New Navy
Wedding Suit!

Navy Sterling Slim Fit Wedding Suit by Michael Kors / 372



Tan Havana Slim Fit Suit by Lord West / 252



Grey Dillon Slim Fit Suit by Stephen Geoffrey / 312

Well Suited.

If you prefer a suit for your wedding day, we offer suit rentals in many colors including Black, Navy, Tan, Steel Grey, and Medium Grey.

Suit rentals are available in big and tall to very small... **we have a suit rental for everyone!**

3-piece Tuxedos and Suits

Add a layer of confidence and style with a matching fullback vest.

Available in seven colors, the coordinating fullback vest is a distinctive look worn by gentlemen who are looking to make a classic fashion statement at their formal affair.



Manhattan Slim Fit Tuxedo
by Tony Bowls / 930
shown with a black fullback vest

Heather Grey Aspen Slim Fit Tuxedo
by Stephen Geoffrey / 362
shown with a plaid bow tie and pocket square

Convenience

for out-of-town groomsmen!

Trust the
Largest
Formalwear
Network with
your Wedding



Saville Tuxedo by Lauren Ralph Lauren / 962

Our Nationwide Network of over 5,000 Retailers provides a convenient service for your out-of-town groomsmen. Our retailers will ensure your wedding party is outfitted properly and looking their very best for your important day. No matter where they live or where your wedding is, we have Jim's Formal Wear Retailers in your area.

Over
5000 Locations
Nationwide!





Items shown are for purchase only:
Plaid Bow Ties
 available in 9 colors
Novelty Suspenders
 available in 16 colors
Formal Socks
 available in 12 colors



Microfiber Fitted Formal Shirts
 available in black, white and ivory



Modern Slim Fit Pants
 a stylish alternative to traditional trousers



Plaid Bow Ties
 add a splash of color with these fun bow ties

It's the Details *that define your Style!*

Show off your personality and create a tuxedo ensemble to reflect your style with any of these optional accessories...

Formal Shoes

left to right:

Dunbar Comfort Shoe

Black Oxford Shoe - NEW!

Cognac Oxford Shoe - NEW!

Plus, 4 additional styles...



Patterned Socks - NEW!

5 patterns to match black, grey, navy, slate blue and tan tuxedos and suits



Pocket Squares
 find a color to match every vest and tie



Ask
about our
Ring Bearer
Savings!

We Fit Everyone.

Big and tall to very small... we have a tux for you!

We are able to fit everyone in your wedding party with sizes ranging from a Boys' size 2 to a Men's size 74 Long. You can count on your Jim's Formal Wear Retailer for expert fitting advice.



Yes, Tuxedo Rental is this easy:

1 CHOOSE YOUR TUX.

Browse, select and create your preferred style using our 'Build A Tux' online application - or - visit a Jim's Formal Wear Retailer for personal, expert advice.

2 VISIT A STORE.

Meet with our formal wear experts and use our in-store fabric swatches to match your wedding colors perfectly. Your party will be professionally fitted for your event, so you'll all look great!

3 PICKUP. ENJOY! RETURN.

Visit the store on your scheduled pickup day for a final fitting. We'll make any necessary adjustments.

Look terrific in your tuxedo and enjoy your event!

Return your tuxedo the next business day after your event.

Find your nearest retailer at:
jimsformalwear.com

We are an Authorized Jim's Formal Wear Retailer:

Grey Aspen Slim Fit Tuxedo
by Stephen Geoffrey / 322